



**Cambridge International Examinations**  
Cambridge International General Certificate of Secondary Education

---

**GEOGRAPHY**

**0460/12**

Paper 1

**May/June 2018**

INSERT

**1 hour 45 minutes**

---

**READ THESE INSTRUCTIONS FIRST**

The Insert contains Figs. 1.1, 1.2 and 1.3 for Question 1, Fig. 4.2 for Question 4, and Figs. 6.1 and 6.2 for Question 6.

The Insert is **not** required by the Examiner.



---

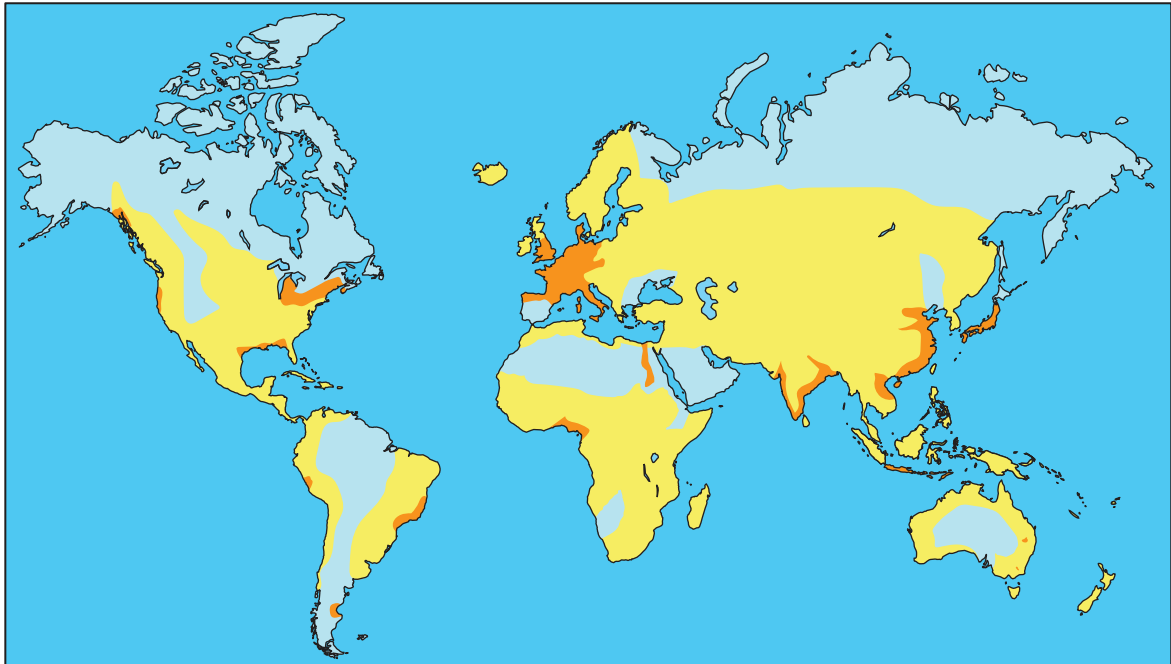
This syllabus is approved for use in England, Wales and Northern Ireland as a Cambridge International Level 1/Level 2 Certificate.

This document consists of **7** printed pages and **1** blank page.



Fig. 1.1 for Question 1

Global population density



Key




-  densely populated
-  moderately populated
-  sparsely populated

Fig. 1.2 for Question 1



Fig. 1.3 for Question 1



Fig. 4.2 for Question 4

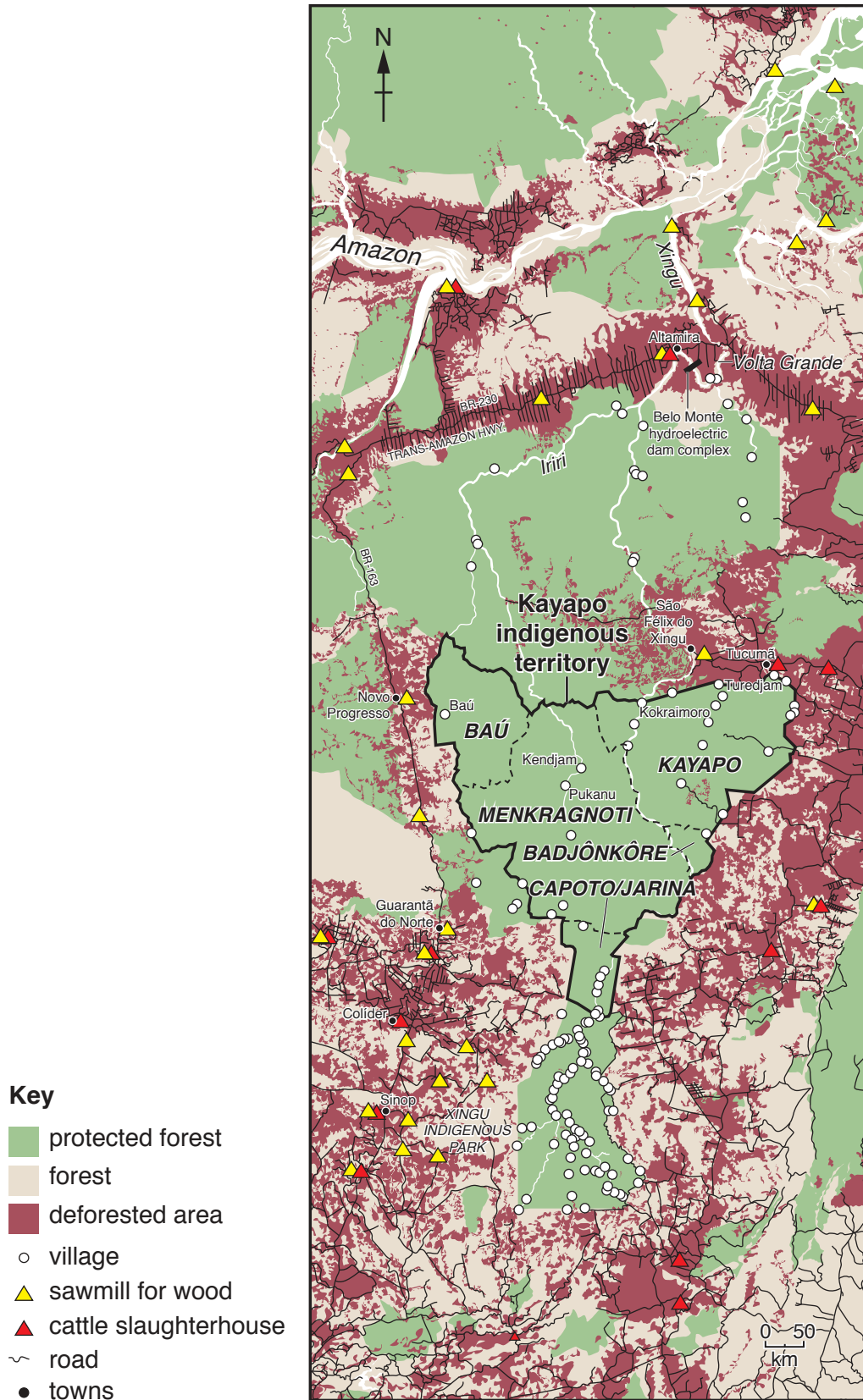
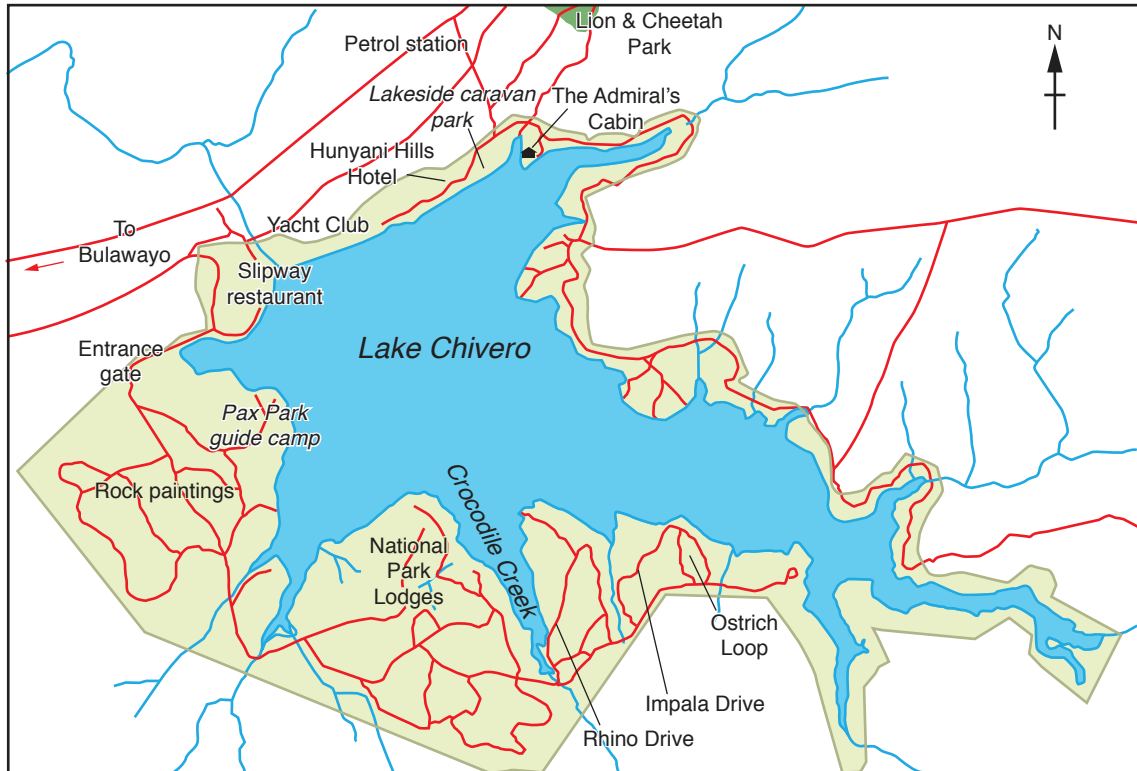


Fig. 6.1 for Question 6

Lake Chivero National Park



Key

- National Park
- lake
- other park
- road
- river
- boundary fence

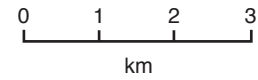


Fig. 6.2 for Question 6



Permission to reproduce items where third-party owned material protected by copyright is included has been sought and cleared where possible. Every reasonable effort has been made by the publisher (UCLES) to trace copyright holders, but if any items requiring clearance have unwittingly been included, the publisher will be pleased to make amends at the earliest possible opportunity.

To avoid the issue of disclosure of answer-related information to candidates, all copyright acknowledgements are reproduced online in the Cambridge International Examinations Copyright Acknowledgements Booklet. This is produced for each series of examinations and is freely available to download at [www.cie.org.uk](http://www.cie.org.uk) after the live examination series.

Cambridge International Examinations is part of the Cambridge Assessment Group. Cambridge Assessment is the brand name of University of Cambridge Local Examinations Syndicate (UCLES), which is itself a department of the University of Cambridge.